



LUMINAIRE TESTING LABORATORY, INC.

SUSTAINING MEMBER
of the
IESNA

905 Harrison Street · Allentown, PA 18103 · 610-770-1044 · Fax 610-770-8912 · www.LuminaireTesting.com

LTL NUMBER: 13228

DATE: 11-05-2008

PREPARED FOR: EB FLUORESCENT COMPANY, INC.

CATALOG NUMBER: IN2/54C ALUMINUM

LUMINAIRE: FORMED WHITE ENAMEL STEEL HOUSING, FORMED SPECULAR ALUMINUM REFLECTOR, NO ENCLOSURE.

LAMPS: TWO 54 WATT HIGH OUTPUT T5 LINEAR FLUORESCENT LAMPS RATED AT 4400 LUMENS EACH.

LAMP CATALOG NUMBER: PHILIPS F54T5/841/HO/ALTO

BALLAST: ONE KEYSTONE TECHNOLOGIES KTEB-254HO-UV-TP-PS/LS

MOUNTING: PENDANT

TOTAL INPUT WATTS =110.3 AT 120.0 VOLTS

THE 0 DEGREE PLANE IS PARALLEL WITH THE LAMPS.

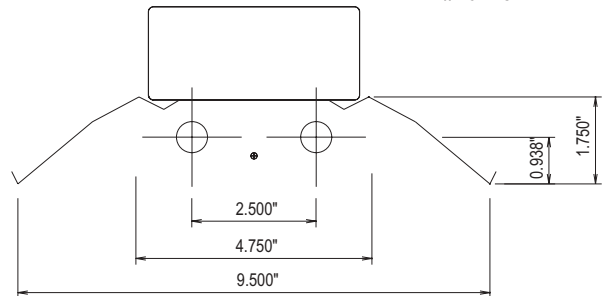
#13228

CANDELA DISTRIBUTION

	0.0	22.5	45.0	67.5	90.0
0	2252	2252	2252	2252	2252
5	2241	2261	2310	2379	2407
15	2141	2388	2936	2884	2866
25	1964	2668	2517	2246	2266
35	1730	2291	1957	1581	1583
45	1431	1654	1323	1570	1659
55	1079	1121	1275	1308	1283
65	699	732	861	1176	1290
75	320	452	735	789	802
85	44	195	68	4	0
90	0	10	0	0	0
95	0	5	0	0	0
105	0	0	0	0	0
115	0	0	0	0	0
125	0	0	0	0	0
135	0	0	0	0	0
145	0	0	0	0	0
155	0	0	0	0	0
165	0	0	0	0	0
175	0	0	0	0	0
180	0	0	0	0	0

FLUX

228
751
1090
1168
1180
1090
930
669
128

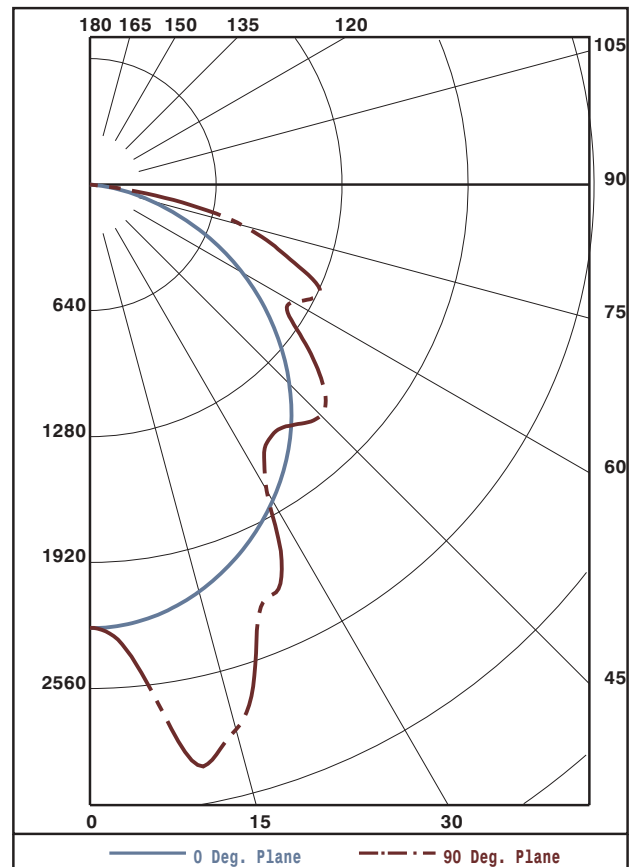


ZONAL LUMEN SUMMARY

ZONE	LUMENS	%LAMP	%FIXT
0- 30	2070	23.5	28.6
0- 40	3238	36.8	44.7
0- 60	5507	62.6	76.1
0- 90	7234	82.2	100.0
90-120	2	0.0	0.0
90-130	2	0.0	0.0
90-150	2	0.0	0.0
90-180	2	0.0	0.0
0-180	7236	82.2	100.0

TOTAL LUMINAIRE EFFICIENCY: 82.2%

CIE TYPE: DIRECT
PLANE: 0-DEG 90-DEG
SPACING CRITERIA: 1.2 1.2



Approved By: MG

THIS REPORT BASED ON LM-41 AND OTHER PERTINENT IESNA PROCEDURES.



LUMINAIRE TESTING LABORATORY, INC.

SUSTAINING MEMBER of the IESNA

905 Harrison Street · Allentown, PA 18103 · 610-770-1044 · Fax 610-770-8912 · www.LuminaireTesting.com

LTL NUMBER: 13228

DATE: 11-05-2008

PREPARED FOR: EB FLUORESCENT COMPANY, INC.

COEFFICIENTS OF UTILIZATION - ZONAL CAVITY METHOD
EFFECTIVE FLOOR CAVITY REFLECTANCE 0.20

Table with columns RC, RW, and rows for angles 80, 70, 50, 30, 10, 0. Each row contains 18 numerical values representing coefficients of utilization.

PLANE: 0-DEG 90-DEG
LUMINOUS LENGTH: 48.000 9.500
HEIGHT OF SIDE: 1.750 0.000

Table titled 'LUMINANCE IN CANDELA PER SQUARE METER' with columns for ANGLE IN DEG and AVERAGE values for 0-DEG, 45-DEG, and 90-DEG.



LUMINAIRE TESTING LABORATORY, INC.

SUSTAINING MEMBER of the IESNA

905 Harrison Street · Allentown, PA 18103 · 610-770-1044 · Fax 610-770-8912 · www.LuminaireTesting.com

LTL NUMBER: 13228
PREPARED FOR: EB FLUORESCENT COMPANY, INC.

DATE: 11-05-2008

CANDELA DISTRIBUTION

Table with 6 columns of candela values for various angles from 0 to 180 degrees.

ZONAL LUMEN SUMMARY

Table with 3 columns showing lumen values for various angular zones from 0-5 to 175-180 degrees.

THIS TEST WAS CONDUCTED USING RELATIVE PHOTOMETRY TECHNIQUES ACCORDING TO STANDARD IESNA PROCEDURES. THE USER MUST THEREFORE USE CAUTION IN THE FOLLOWING SITUATIONS: 1) THIS TEST WAS PERFORMED USING A SPECIFIC BALLAST/LAMP COMBINATION. EXTRAPOLATION OF THESE DATA FOR OTHER BALLAST/LAMP COMBINATIONS MAY PRODUCE ERRONEOUS RESULTS. 2) ACCORDING TO IESNA PROCEDURES, THE BALLAST(S) AND LAMP(S) ARE PRESUMED TO PRODUCE 100% OF RATED OUTPUT. AN APPROPRIATE BALLAST FACTOR MUST BE APPLIED TO THE LUMEN OUTPUT RATINGS AND LUMINOUS INTENSITY VALUES GIVEN. 3) THIS TEST WAS CONDUCTED IN A CONTROLLED LABORATORY ENVIRONMENT WHERE THE AMBIENT TEMPERATURE WAS HELD AT 25°C ±1°C. FIELD PERFORMANCE MAY DIFFER PARTICULARLY IN REGARDS TO CHANGE IN LUMINOUS OUTPUT AS A RESULT OF DIFFERENCE IN AMBIENT TEMPERATURE AND METHOD OF MOUNTING THE LUMINAIRE.