



LUMINAIRE TESTING LABORATORY, INC.

SUSTAINING MEMBER of the IESNA

905 Harrison Street · Allentown, PA 18103 · 610-770-1044 · Fax 610-770-8912 · www.LuminaireTesting.com

LTL NUMBER: 13224 DATE: 09-12-2008
 PREPARED FOR: EB FLUORESCENT COMPANY, INC.
 CATALOG NUMBER: IN2/32C ALUMINUM
 LUMINAIRE: FORMED WHITE ENAMEL STEEL HOUSING, FORMED SPECULAR ALUMINUM REFLECTOR, NO ENCLOSURE.
 LAMPS: TWO 32 WATT T8 LINEAR FLUORESCENT LAMPS RATED AT 2850 LUMENS EACH.
 LAMP CATALOG NUMBER: PHILIPS F32T8/TL841/ALTO
 BALLAST: ONE UNIVERSAL LIGHTING TECHNOLOGIES B232IUNVHP-B
 MOUNTING: PENDANT

TOTAL INPUT WATTS = 56.9 AT 120.0 VOLTS
 THE 0 DEGREE PLANE IS PARALLEL WITH THE LAMPS.

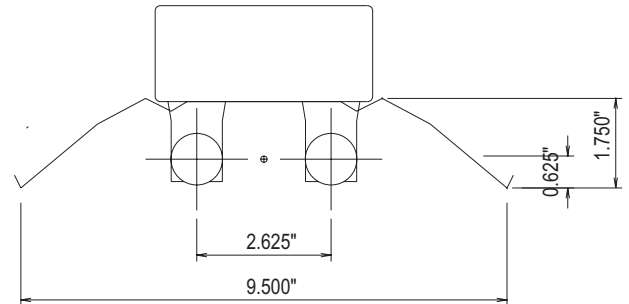
#13224

CANDELA DISTRIBUTION

	0.0	22.5	45.0	67.5	90.0
0	1814	1814	1814	1814	1814
5	1806	1804	1798	1809	1815
15	1724	1751	1759	1738	1712
25	1584	1627	1501	1416	1447
35	1398	1386	1294	1235	1187
45	1164	1055	989	970	961
55	884	841	743	824	924
65	578	514	687	870	892
75	266	331	513	528	528
85	35	136	126	116	113
90	0	11	0	0	0
95	0	8	0	0	0
105	0	1	0	0	0
115	0	0	0	0	0
125	0	0	0	0	0
135	0	0	0	0	0
145	0	0	0	0	0
155	0	0	0	0	0
165	0	0	0	0	0
175	0	0	0	0	0
180	0	0	0	0	0

FLUX

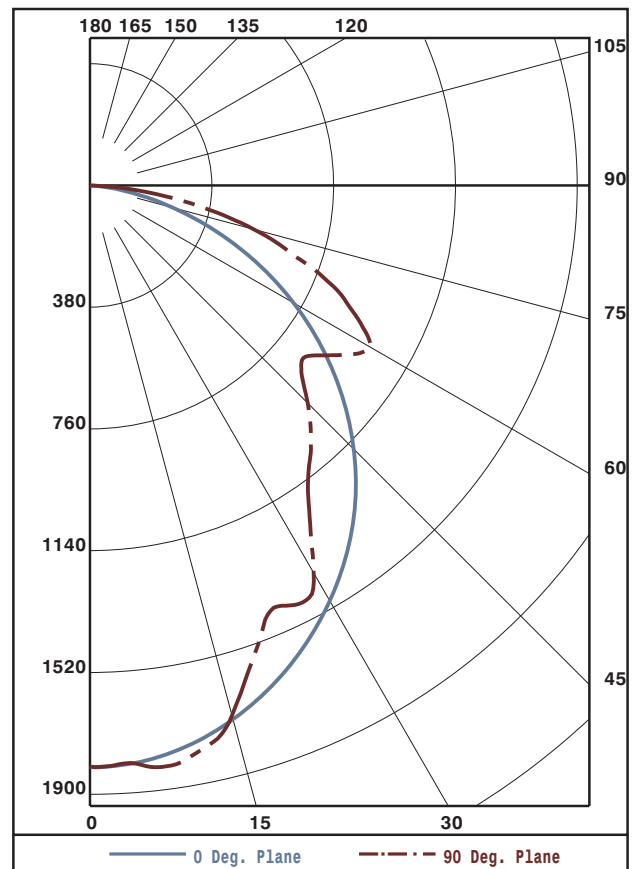
173
489
704
816
788
742
693
463
127



ZONAL LUMEN SUMMARY

ZONE	LUMENS	%LAMP	%FIXT
0- 30	1366	24.0	27.3
0- 40	2181	38.3	43.7
0- 60	3711	65.1	74.3
0- 90	4995	87.6	100.0
90-120	2	0.0	0.0
90-130	2	0.0	0.0
90-150	2	0.0	0.0
90-180	2	0.0	0.0
0-180	4997	87.7	100.0

TOTAL LUMINAIRE EFFICIENCY: 87.7%
 CIE TYPE: DIRECT
 PLANE: 0-DEG 90-DEG
 SPACING CRITERIA: 1.2 1.2



Approved By: MG



LUMINAIRE TESTING LABORATORY, INC.

SUSTAINING MEMBER of the IESNA

905 Harrison Street · Allentown, PA 18103 · 610-770-1044 · Fax 610-770-8912 · www.LuminaireTesting.com

LTL NUMBER: 13224

DATE: 09-12-2008

PREPARED FOR: EB FLUORESCENT COMPANY, INC.

COEFFICIENTS OF UTILIZATION - ZONAL CAVITY METHOD
EFFECTIVE FLOOR CAVITY REFLECTANCE 0.20

Table with 10 rows (RC 0-10) and 19 columns (RW 70, 50, 30, 10 for each of the four RC values). Values range from 31 to 104.

PLANE: 0-DEG 90-DEG
LUMINOUS LENGTH: 48.000 9.500
HEIGHT OF SIDE: 1.750 0.000

Table with 4 columns: ANGLE IN DEG, AVERAGE 0-DEG, AVERAGE 45-DEG, AVERAGE 90-DEG. Values range from 1680 to 12331.



LUMINAIRE TESTING LABORATORY, INC.

SUSTAINING MEMBER of the IESNA

905 Harrison Street · Allentown, PA 18103 · 610-770-1044 · Fax 610-770-8912 · www.LuminaireTesting.com

LTL NUMBER: 13224
PREPARED FOR: EB FLUORESCENT COMPANY, INC.

DATE: 09-12-2008

CANDELA DISTRIBUTION

Table with 6 columns of candela values for various angles from 0 to 180 degrees.

ZONAL LUMEN SUMMARY

Table with 2 columns showing lumen values for various angular zones from 0-5 to 175-180 degrees.

THIS TEST WAS CONDUCTED USING RELATIVE PHOTOMETRY TECHNIQUES ACCORDING TO STANDARD IESNA PROCEDURES. THE USER MUST THEREFORE USE CAUTION IN THE FOLLOWING SITUATIONS: 1) THIS TEST WAS PERFORMED USING A SPECIFIC BALLAST/LAMP COMBINATION. EXTRAPOLATION OF THESE DATA FOR OTHER BALLAST/LAMP COMBINATIONS MAY PRODUCE ERRONEOUS RESULTS. 2) ACCORDING TO IESNA PROCEDURES, THE BALLAST(S) AND LAMP(S) ARE PRESUMED TO PRODUCE 100% OF RATED OUTPUT. AN APPROPRIATE BALLAST FACTOR MUST BE APPLIED TO THE LUMEN OUTPUT RATINGS AND LUMINOUS INTENSITY VALUES GIVEN. 3) THIS TEST WAS CONDUCTED IN A CONTROLLED LABORATORY ENVIRONMENT WHERE THE AMBIENT TEMPERATURE WAS HELD AT 25°C ±1°C. FIELD PERFORMANCE MAY DIFFER PARTICULARLY IN REGARDS TO CHANGE IN LUMINOUS OUTPUT AS A RESULT OF DIFFERENCE IN AMBIENT TEMPERATURE AND METHOD OF MOUNTING THE LUMINAIRE.