



LUMINAIRE TESTING LABORATORY, INC.

SUSTAINING MEMBER of the IESNA

905 Harrison Street · Allentown, PA 18103 · 610-770-1044 · Fax 610-770-8912 · www.LuminaireTesting.com

LTL NUMBER: 13222 DATE: 11-05-2008
 PREPARED FOR: EB FLUORESCENT COMPANY, INC.
 CATALOG NUMBER: IN2/32C WHITE
 LUMINAIRE: FORMED WHITE ENAMEL STEEL HOUSING, FORMED WHITE ENAMEL STEEL REFLECTOR, NO ENCLOSURE.
 LAMPS: TWO 32 WATT T8 LINEAR FLUORESCENT LAMPS RATED AT 2850 LUMENS EACH.
 LAMP CATALOG NUMBER: PHILIPS F32T8/TL841/ALTO
 BALLAST: ONE UNIVERSAL LIGHTING TECHNOLOGIES B232IUNVHP-B
 MOUNTING: PENDANT
 TOTAL INPUT WATTS = 56.9 AT 120.0 VOLTS
 THE 0 DEGREE PLANE IS PARALLEL WITH THE LAMPS.

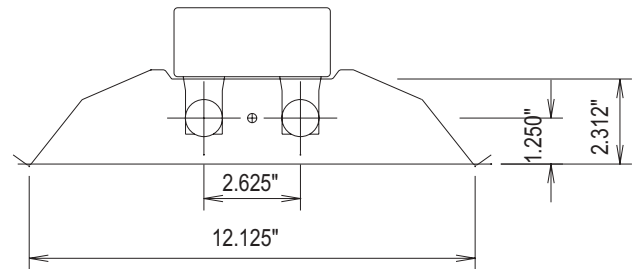
CANDELA DISTRIBUTION

	0.0	22.5	45.0	67.5	90.0
0	1380	1380	1380	1380	1380
5	1373	1378	1378	1382	1384
15	1327	1343	1363	1383	1391
25	1238	1271	1321	1369	1385
35	1110	1168	1253	1305	1328
45	947	1035	1135	1193	1217
55	754	871	965	1050	1074
65	533	661	770	831	844
75	289	418	485	432	404
85	49	127	75	42	36
90	0	31	17	10	10
95	0	19	6	0	0
105	0	4	1	0	0
115	0	0	0	0	0
125	0	0	0	0	0
135	0	0	0	0	0
145	0	0	0	0	0
155	0	0	0	0	0
165	0	0	0	0	0
175	0	0	0	0	0
180	0	0	0	0	0

FLUX

131
385
609
775
858
850
729
441
97

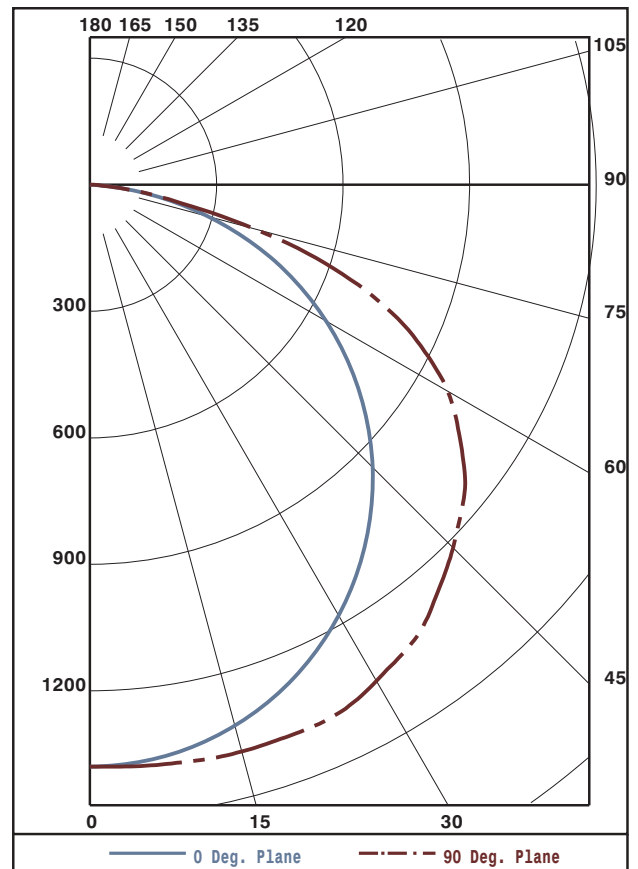
#13222



ZONAL LUMEN SUMMARY

ZONE	LUMENS	%LAMP	%FIXT
0- 30	1126	19.8	23.1
0- 40	1900	33.3	38.9
0- 60	3608	63.3	73.9
0- 90	4876	85.5	99.8
90-120	8	0.1	0.2
90-130	8	0.1	0.2
90-150	8	0.1	0.2
90-180	8	0.1	0.2
0-180	4883	85.7	100.0

TOTAL LUMINAIRE EFFICIENCY: 85.7%
 TOTAL REFLECTANCE OF PAINT: 82.9%
 CIE TYPE: DIRECT
 PLANE: 0-DEG 90-DEG
 SPACING CRITERIA: 1.3 1.5



Approved By: MG



LUMINAIRE TESTING LABORATORY, INC.

SUSTAINING MEMBER of the IESNA

905 Harrison Street · Allentown, PA 18103 · 610-770-1044 · Fax 610-770-8912 · www.LuminaireTesting.com

LTL NUMBER: 13222

DATE: 11-05-2008

PREPARED FOR: EB FLUORESCENT COMPANY, INC.

COEFFICIENTS OF UTILIZATION - ZONAL CAVITY METHOD
EFFECTIVE FLOOR CAVITY REFLECTANCE 0.20

Table with 10 rows (RC, RW) and 19 columns of utilization coefficients for various room dimensions and heights.

PLANE: 0-DEG 90-DEG
LUMINOUS LENGTH: 48.000 12.125
HEIGHT OF SIDE: 2.312 0.000

Table showing LUMINANCE IN CANDELA PER SQUARE METER for various angles (0, 45, 55, 65, 75, 85) and average values.



LUMINAIRE TESTING LABORATORY, INC.

SUSTAINING MEMBER of the IESNA

905 Harrison Street · Allentown, PA 18103 · 610-770-1044 · Fax 610-770-8912 · www.LuminaireTesting.com

LTL NUMBER: 13222
PREPARED FOR: EB FLUORESCENT COMPANY, INC.

DATE: 11-05-2008

CANDELA DISTRIBUTION

Table with 6 columns representing candela values at various angles (0.0, 22.5, 45.0, 67.5, 90.0) for angles from 0 to 180 degrees.

ZONAL LUMEN SUMMARY

Table with 2 columns representing zonal lumen values for angular zones from 0-5 to 175-180 degrees.

THIS TEST WAS CONDUCTED USING RELATIVE PHOTOMETRY TECHNIQUES ACCORDING TO STANDARD IESNA PROCEDURES. THE USER MUST THEREFORE USE CAUTION IN THE FOLLOWING SITUATIONS: 1) THIS TEST WAS PERFORMED USING A SPECIFIC BALLAST/LAMP COMBINATION. EXTRAPOLATION OF THESE DATA FOR OTHER BALLAST/LAMP COMBINATIONS MAY PRODUCE ERRONEOUS RESULTS. 2) ACCORDING TO IESNA PROCEDURES, THE BALLAST(S) AND LAMP(S) ARE PRESUMED TO PRODUCE 100% OF RATED OUTPUT. AN APPROPRIATE BALLAST FACTOR MUST BE APPLIED TO THE LUMEN OUTPUT RATINGS AND LUMINOUS INTENSITY VALUES GIVEN. 3) THIS TEST WAS CONDUCTED IN A CONTROLLED LABORATORY ENVIRONMENT WHERE THE AMBIENT TEMPERATURE WAS HELD AT 25°C ±1°C. FIELD PERFORMANCE MAY DIFFER PARTICULARLY IN REGARDS TO CHANGE IN LUMINOUS OUTPUT AS A RESULT OF DIFFERENCE IN AMBIENT TEMPERATURE AND METHOD OF MOUNTING THE LUMINAIRE.