



LUMINAIRE TESTING LABORATORY, INC.

SUSTAINING MEMBER of the IESNA

905 Harrison Street · Allentown, PA 18103 · 610-770-1044 · Fax 610-770-8912 · www.LuminaireTesting.com

LTL NUMBER: 13197

DATE: 09-12-2008

PREPARED FOR: EB FLUORESCENT COMPANY, INC.

CATALOG NUMBER: HOC 2/48

LUMINAIRE: FORMED WHITE ENAMEL STEEL HOUSING/REFLECTOR, NO ENCLOSURE.

LAMPS: TWO 60 WATT T12 HIGH OUTPUT LINEAR FLUORESCENT LAMPS RATED AT 4050 LUMENS EACH.

LAMP CATALOG NUMBER: PHILIPS F48T12/CW/HO/ALTO

BALLAST: ONE KEYSTONE TECHNOLOGIES KTEB-2110-1-TP-PIC

MOUNTING: PENDANT

TOTAL INPUT WATTS =110.9 AT 120.0 VOLTS

THE 0 DEGREE PLANE IS PARALLEL WITH THE LAMPS.

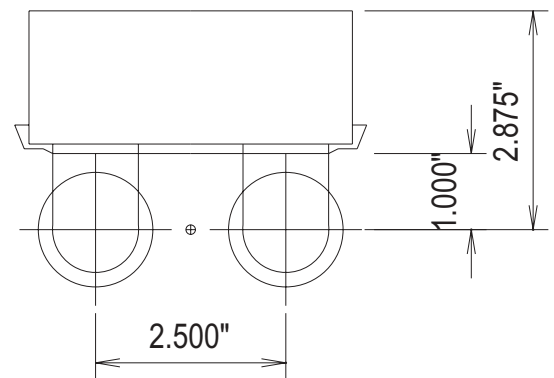
#13197

CANDELA DISTRIBUTION

	0.0	22.5	45.0	67.5	90.0
0	1353	1353	1353	1353	1353
5	1345	1346	1346	1351	1353
15	1296	1301	1320	1351	1363
25	1200	1220	1293	1360	1386
35	1062	1115	1242	1346	1385
45	888	984	1163	1301	1350
55	685	832	1052	1205	1256
65	461	663	894	1044	1096
75	233	471	691	849	905
85	38	262	463	606	659
90	0	164	362	509	561
95	0	176	407	577	636
105	0	134	358	524	583
115	0	100	292	443	499
125	0	68	225	351	399
135	0	37	159	257	295
145	0	7	94	165	193
155	0	0	33	78	96
165	0	0	0	5	13
175	0	0	0	0	0
180	0	0	0	0	0

FLUX

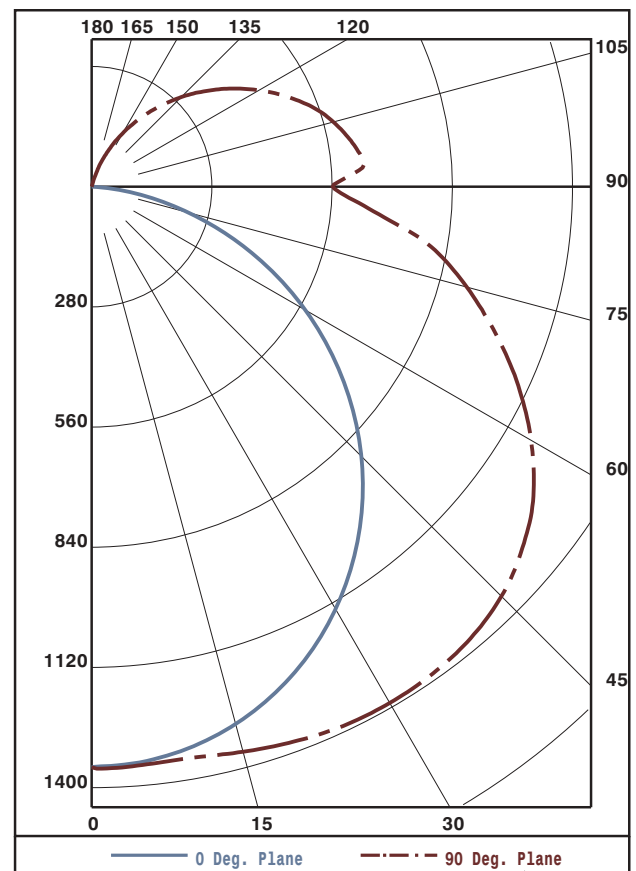
128
375
597
773
883
908
837
681
462
393
346
269
190
117
58
19
2
0



ZONAL LUMEN SUMMARY

ZONE	LUMENS	%LAMP	%FIXT
0- 30	1101	13.6	15.6
0- 40	1873	23.1	26.6
0- 60	3664	45.2	52.1
0- 90	5644	69.7	80.2
90-120	1008	12.4	14.3
90-130	1197	14.8	17.0
90-150	1371	16.9	19.5
90-180	1392	17.2	19.8
0-180	7036	86.9	100.0

TOTAL LUMINAIRE EFFICIENCY: 86.9%
 TOTAL REFLECTANCE OF PAINT: 86.9%
 CIE TYPE: SEMI-DIRECT
 PLANE: 0-DEG 90-DEG
 SPACING CRITERIA: 1.2 1.6



Approved By: MG



LUMINAIRE TESTING LABORATORY, INC.

SUSTAINING MEMBER of the IESNA

905 Harrison Street · Allentown, PA 18103 · 610-770-1044 · Fax 610-770-8912 · www.LuminaireTesting.com

LTL NUMBER: 13197

DATE: 09-12-2008

PREPARED FOR: EB FLUORESCENT COMPANY, INC.

COEFFICIENTS OF UTILIZATION - ZONAL CAVITY METHOD
EFFECTIVE FLOOR CAVITY REFLECTANCE 0.20

Table with 17 columns (RC, RW, and 15 numerical values) and 11 rows (0-10). Values represent utilization coefficients for different room cavity ratios and reflectance levels.

PLANE: 0-DEG 90-DEG
LUMINOUS LENGTH: 48.000 4.500
HEIGHT OF SIDE: 1.875 1.875

Table with 4 columns (ANGLE IN DEG, AVERAGE 0-DEG, AVERAGE 45-DEG, AVERAGE 90-DEG) and 6 rows (0, 45, 55, 65, 75, 85). Values represent average luminance in candela per square meter.



LUMINAIRE TESTING LABORATORY, INC.

SUSTAINING MEMBER of the IESNA

905 Harrison Street · Allentown, PA 18103 · 610-770-1044 · Fax 610-770-8912 · www.LuminaireTesting.com

LTL NUMBER: 13197

DATE: 09-12-2008

PREPARED FOR: EB FLUORESCENT COMPANY, INC.

CANDELA DISTRIBUTION

Table with 6 columns of candela values for various angles from 0 to 180 degrees.

ZONAL LUMEN SUMMARY

Table with 3 columns showing lumen values for various angular zones from 0-5 to 175-180 degrees.

THIS TEST WAS CONDUCTED USING RELATIVE PHOTOMETRY TECHNIQUES ACCORDING TO STANDARD IESNA PROCEDURES. THE USER MUST THEREFORE USE CAUTION IN THE FOLLOWING SITUATIONS: 1) THIS TEST WAS PERFORMED USING A SPECIFIC BALLAST/LAMP COMBINATION. EXTRAPOLATION OF THESE DATA FOR OTHER BALLAST/LAMP COMBINATIONS MAY PRODUCE ERRONEOUS RESULTS. 2) ACCORDING TO IESNA PROCEDURES, THE BALLAST(S) AND LAMP(S) ARE PRESUMED TO PRODUCE 100% OF RATED OUTPUT. AN APPROPRIATE BALLAST FACTOR MUST BE APPLIED TO THE LUMEN OUTPUT RATINGS AND LUMINOUS INTENSITY VALUES GIVEN. 3) THIS TEST WAS CONDUCTED IN A CONTROLLED LABORATORY ENVIRONMENT WHERE THE AMBIENT TEMPERATURE WAS HELD AT 25°C ±1°C. FIELD PERFORMANCE MAY DIFFER PARTICULARLY IN REGARDS TO CHANGE IN LUMINOUS OUTPUT AS A RESULT OF DIFFERENCE IN AMBIENT TEMPERATURE AND METHOD OF MOUNTING THE LUMINAIRE.