



LUMINAIRE TESTING LABORATORY, INC.

SUSTAINING MEMBER of the IESNA

905 Harrison Street · Allentown, PA 18103 · 610-770-1044 · Fax 610-770-8912 · www.LuminaireTesting.com

LTL NUMBER: 13200
PREPARED FOR: EB FLUORESCENT COMPANY, INC.
CATALOG NUMBER: 78 4/32
LUMINAIRE: FORMED WHITE ENAMEL STEEL HOUSING/REFLECTOR, CLEAR PRISMATIC PLASTIC LENS WITH LINEAR PRISMATIC SIDES.
LAMPS: FOUR 32 WATT T8 LINEAR FLUORESCENT LAMPS RATED AT 2850 LUMENS EACH.
LAMP CATALOG NUMBER: PHILIPS F32T8/TL841/ALTO
BALLAST: ONE ADVANCE ICN-4P32-SC
MOUNTING: SURFACE

DATE: 05-23-2008

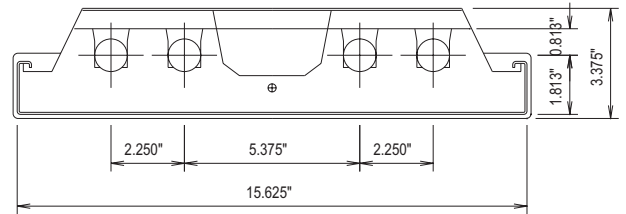
LUMEN TO CANDELA RATIO USED = 9.18
TOTAL INPUT WATTS = 105.9 AT 120.0 VOLTS
THE 0 DEGREE PLANE IS PARALLEL WITH THE LAMPS.

#13200

CANDELA DISTRIBUTION					
	0.0	22.5	45.0	67.5	90.0
0	2990	2990	2990	2990	2990
5	2968	2975	2979	2980	2977
15	2869	2886	2900	2911	2916
25	2675	2702	2744	2776	2785
35	2366	2414	2497	2545	2558
45	1886	1941	1956	1907	1876
55	923	1180	1175	1015	1051
65	531	613	595	677	597
75	290	290	378	481	457
85	105	147	236	337	366
90	3	59	161	193	201
95	3	50	98	102	103
105	7	45	72	79	89
115	0	44	74	87	84
125	0	28	62	74	82
135	0	18	40	58	66
145	3	19	38	42	40
155	7	17	17	28	37
165	7	15	15	21	17
175	10	10	15	13	16
180	10	10	10	10	10

FLUX

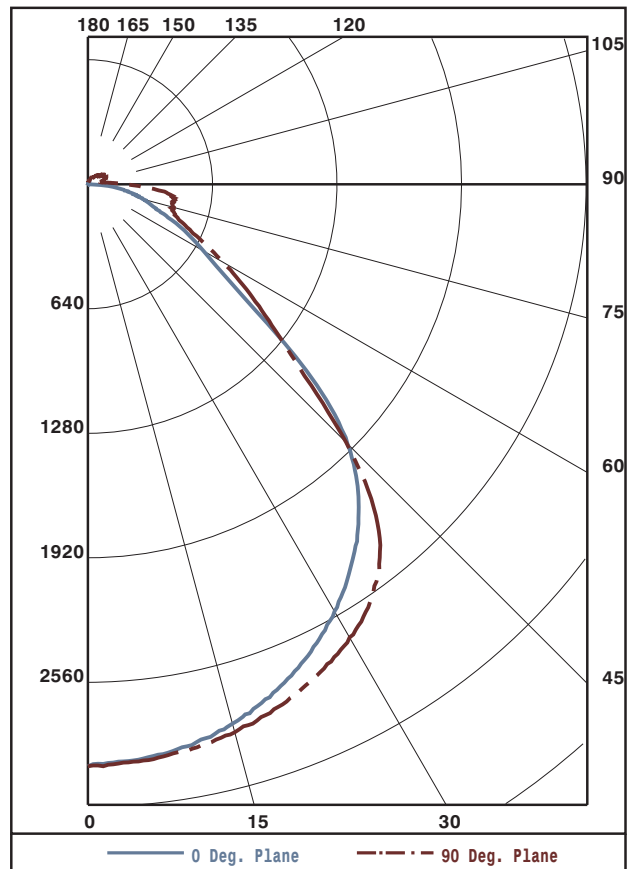
283
819
1262
1550
1469
982
613
403
253
88
62
62
47
29
18
10
5
1



ZONAL LUMEN SUMMARY

ZONE	LUMENS	%LAMP	%FIXT
0- 30	2364	20.7	29.7
0- 40	3915	34.3	49.2
0- 60	6366	55.8	80.0
0- 90	7634	67.0	95.9
90-120	213	1.9	2.7
90-130	260	2.3	3.3
90-150	308	2.7	3.9
90-180	324	2.8	4.1
0-180	7958	69.8	100.0

TOTAL LUMINAIRE EFFICIENCY: 69.8%
TOTAL REFLECTANCE OF PAINT: 83.1%
CIE TYPE: DIRECT
PLANE: 0-DEG 90-DEG
SPACING CRITERIA: 1.3 1.3



Approved By: MG



LUMINAIRE TESTING LABORATORY, INC.

SUSTAINING MEMBER of the IESNA

905 Harrison Street · Allentown, PA 18103 · 610-770-1044 · Fax 610-770-8912 · www.LuminaireTesting.com

LTL NUMBER: 13200

DATE: 05-23-2008

PREPARED FOR: EB FLUORESCENT COMPANY, INC.

COEFFICIENTS OF UTILIZATION - ZONAL CAVITY METHOD
EFFECTIVE FLOOR CAVITY REFLECTANCE 0.20

Table with columns RC, RW, and rows for angles 80, 70, 50, 30, 10, 0. Each cell contains a numerical value representing the coefficient of utilization.

PLANE: 0-DEG 90-DEG
LUMINOUS LENGTH: 48.000 15.625
HEIGHT OF SIDE: 0.000 1.625

LUMINANCE IN CANDELA PER SQUARE METER
ANGLE AVERAGE AVERAGE AVERAGE

Table with columns IN DEG, 0-DEG, 45-DEG, 90-DEG and rows for angles 0, 45, 55, 65, 75, 85. Each cell contains a numerical value representing luminance.



LUMINAIRE TESTING LABORATORY, INC.

SUSTAINING MEMBER of the IESNA

905 Harrison Street · Allentown, PA 18103 · 610-770-1044 · Fax 610-770-8912 · www.LuminaireTesting.com

LTL NUMBER: 13200
PREPARED FOR: EB FLUORESCENT COMPANY, INC.

DATE: 05-23-2008

CANDELA DISTRIBUTION

Table with 6 columns of candela values for various angles from 0 to 180 degrees.

ZONAL LUMEN SUMMARY

Table with 2 columns showing lumen values for various angular zones from 0-5 to 175-180 degrees.

THIS TEST WAS CONDUCTED USING RELATIVE PHOTOMETRY TECHNIQUES ACCORDING TO STANDARD IESNA PROCEDURES. THE USER MUST THEREFORE USE CAUTION IN THE FOLLOWING SITUATIONS: 1) THIS TEST WAS PERFORMED USING A SPECIFIC BALLAST/LAMP COMBINATION. EXTRAPOLATION OF THESE DATA FOR OTHER BALLAST/LAMP COMBINATIONS MAY PRODUCE ERRONEOUS RESULTS. 2) ACCORDING TO IESNA PROCEDURES, THE BALLAST(S) AND LAMP(S) ARE PRESUMED TO PRODUCE 100% OF RATED OUTPUT. AN APPROPRIATE BALLAST FACTOR MUST BE APPLIED TO THE LUMEN OUTPUT RATINGS AND LUMINOUS INTENSITY VALUES GIVEN. 3) THIS TEST WAS CONDUCTED IN A CONTROLLED LABORATORY ENVIRONMENT WHERE THE AMBIENT TEMPERATURE WAS HELD AT 25°C ±1°C. FIELD PERFORMANCE MAY DIFFER PARTICULARLY IN REGARDS TO CHANGE IN LUMINOUS OUTPUT AS A RESULT OF DIFFERENCE IN AMBIENT TEMPERATURE AND METHOD OF MOUNTING THE LUMINAIRE.